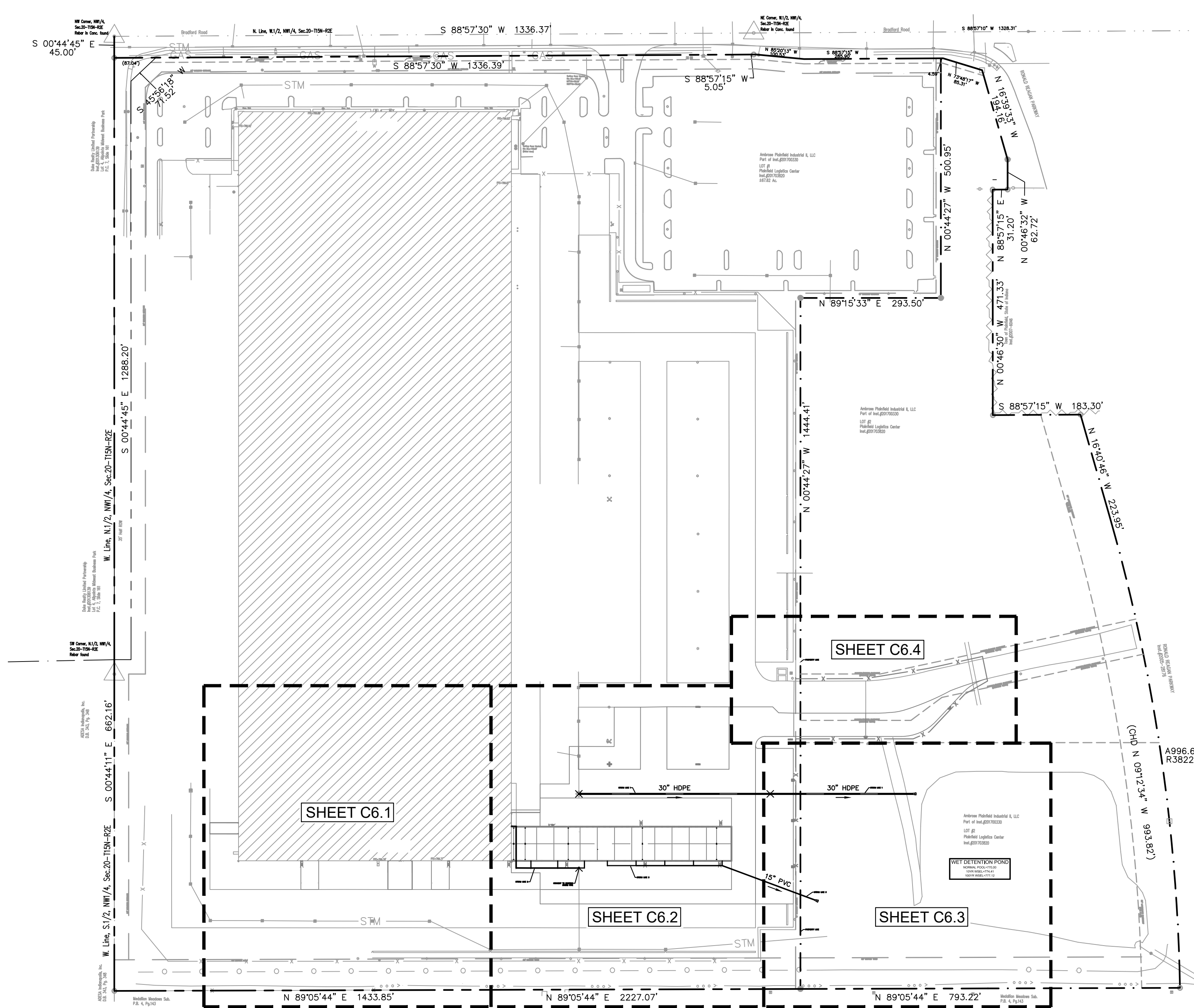
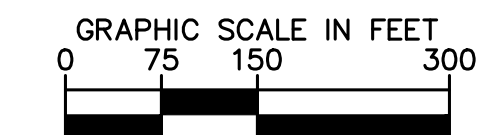
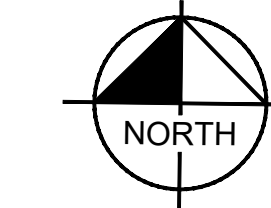




before you dig



### UTILITY NOTES

#### GENERAL UTILITY NOTES

1. ALL WATER LINES SHALL BE PVC C900 DR-14 OR DUCTILE IRON CL 350.
2. ALL SANITARY SEWER LINES SHALL BE PVC MEETING ASTM D-3034 SDR 26 EXCEPT FOR SANITARY SEWER THAT CROSSES ABOVE WATER MAIN. THIS PIPE SHALL BE AWWA C900 (UNLESS WATER MAIN CASING IS UTILIZED). PROVIDE 24" MINIMUM COVER.
3. CONTRACTOR SHALL COORDINATE ANY DISRUPTIONS TO EXISTING UTILITY SERVICES WITH ADJACENT PROPERTY OWNERS.
4. ALL ELECTRIC AND TELEPHONE EXTENSIONS INCLUDING SERVICE LINES SHALL BE CONSTRUCTED TO THE APPROPRIATE UTILITY COMPANY SPECIFICATIONS. ALL UTILITY DISCONNECTIONS SHALL BE COORDINATED WITH THE DESIGNATED UTILITY COMPANIES.
5. CONSTRUCTION SHALL NOT START ON ANY PUBLIC UTILITY SYSTEM UNTIL WRITTEN APPROVAL HAS BEEN RECEIVED BY THE ENGINEER FROM THE APPROPRIATE GOVERNING AUTHORITY AND CONTRACTOR HAS BEEN NOTIFIED BY THE ENGINEER.
6. CONTRACTOR TO CALL INDIANA 811 (811 OR 800-382-5544) TO COORDINATE FIELD LOCATIONS OF EXISTING UNDERGROUND UTILITIES BEFORE ORDERING MATERIALS OR COMMENCING CONSTRUCTION. NOTIFY ENGINEER OF ANY DISCREPANCIES IMMEDIATELY.
7. PRIOR TO THE CONSTRUCTION OF OR CONNECTION TO ANY STORM DRAIN, SANITARY SEWER, WATER MAIN OR ANY OTHER UTILITIES, THE CONTRACTOR SHALL EXCAVATE, VERIFY AND CALCULATE ALL POINTS OF CONNECTION AND ALL UTILITY CROSSINGS AND INFORM THE ENGINEER AND THE OWNER/DEVELOPER OF ANY CONFLICT OR REQUIRED DEVIATIONS FROM THE PLAN. NOTIFICATION SHALL BE MADE A MINIMUM OF 72 HOURS PRIOR TO CONSTRUCTION. THE ENGINEER AND ITS CLIENTS SHALL BE HELD HARMLESS IN THE EVENT THAT THE CONTRACTOR FAILS TO MAKE SUCH NOTIFICATION. THE MUNICIPALITY SHALL BE NOTIFIED OF ANY AND ALL CHANGES TO THE DESIGN PLANS.
8. CONTRACTOR SHALL COMPLY COMPLETELY WITH THE LATEST STANDARDS OF OSHA DIRECTIVES OR ANY OTHER AGENCY HAVING JURISDICTION FOR EXCAVATION AND TRENCHING PROCEDURES. THE CONTRACTOR SHALL USE SUPPORT SYSTEMS, SHORING, BENCHING AND OTHER MEANS OF PROTECTION. THIS IS TO INCLUDE, BUT NOT LIMITED FOR ACCESS AND EGRESS FROM ALL EXCAVATION AND TRENCHING. CONTRACTOR IS RESPONSIBLE FOR COMPLYING WITH PERFORMANCE CRITERIA AS REQUIRED BY OSHA.
9. CONTRACTOR TO AVOID DISRUPTION OF ANY ADJACENT TENANT'S TRAFFIC OPERATIONS DURING INSTALLATION OF UTILITIES.
10. ALL DIMENSIONS ARE TO CENTERLINE OF PIPE OR CENTER OF MANHOLE LOCATIONS AT BUILDING.
11. SEE ARCHITECTURAL AND MEP PLANS FOR EXACT UTILITY CONNECTION LOCATIONS AT BUILDING.
12. LIGHT POLES SHOWN FOR COORDINATION PURPOSES ONLY AND DO NOT REPRESENT ACTUAL SIZE. SEE SITE LIGHTING PLANS BY OTHERS FOR MORE INFORMATION.
13. SEE DETAILS FOR LOCATING STORM STRUCTURES WITHIN THE CURB LINE.
14. STORMWATER FACILITIES MUST BE FUNCTIONAL BEFORE BUILDING CONSTRUCTION BEGINS.
15. ALL SANITARY SEWERS AND STRUCTURES SHALL BE IN COMPLIANCE WITH CITY OF PLAINFIELD STANDARDS SHEETS 13-16.
16. ALL STORM SEWERS AND STRUCTURES SHALL BE IN COMPLIANCE WITH CITY OF PLAINFIELD STANDARDS SHEETS 07-09.
17. ALL WATER LINES AND STRUCTURES SHALL BE IN COMPLIANCE WITH CITY OF PLAINFIELD STANDARDS SHEETS 10-12.

### UTILITY LEGEND

	EX. WATER LINE
	EX. HYDRANT
	EX. WATER VALVE
	EX. SANITARY SEWER LINE
	EX. SANITARY SEWER MANHOLE
	EX. STORM DRAIN LINE
	EX. STORM MANHOLE
	EX. STORM STRUCTURE/INLET
	EX. GAS LINE
	EX. GAS METER
	EX. OVERHEAD ELECTRIC LINE
	EX. UNDERGROUND TELEPHONE LINE
	EX. LIGHT POLE
	PROPOSED UNDERGROUND ELECTRIC LINE
	GAS LINE (BY GAS COMPANY)
	PROPOSED PHONE LINE
	PROPOSED STORM SEWER LINE
	PROPOSED OPEN LID STORM STRUCTURE (REFER TO STRUCTURE TABLES FOR FRAME AND CASTING TYPE)
	PROPOSED CLOSED LID STORM STRUCTURE (REFER TO STRUCTURE TABLES FOR FRAME AND CASTING TYPE)
	PROPOSED OPEN LID CURB STRUCTURE (REFER TO STRUCTURE TABLES FOR FRAME AND CASTING TYPE)
	PROPOSED SANITARY SEWER LINE
	PROPOSED SANITARY MANHOLE
	PROPOSED STORM/SANITARY CLEANOUT
	PROPOSED WATER LINE
	PROPOSED VALVE BOX
	PROPOSED FIRE HYDRANT
	PROPOSED LIGHT POLE

NO.	REVISIONS	DATE	BY

**Kimley-Horn**  
 60015 KIMLEY-HORN AND ASSOCIATES, INC.  
 250 EAST 96TH STREET, SUITE 550,  
 INDIANAPOLIS, IN 46240  
 WWW.KIMLEY-HORN.COM

SCALE: AS NOTED  
 DESIGNED BY: BAS  
 DRAWN BY: LDS  
 CHECKED BY: WBS



**OVERALL UTILITY PLAN**

**UPS ADDITION**  
 10095 BRADFORD RD., PLAINFIELD, IN 46168

ORIGINAL ISSUE:  
 02/28/18  
 KHA PROJECT NO.  
 170050000  
 SHEET NUMBER

C6.0

Drawing name: K:\IND\_LBE\170050000\_Pepper\_LIPS-Phase-2-Expansion\_Planfield\_MN2\_Design\CADD\PlanSheet\C6.0\_UTILITY\_PLAN.dwg C6.0\_OVERALL Feb 27, 2018 8:40am by: bryan.sheppard  
 This document, together with the concepts and designs presented herein, is intended only for the specific purpose and client for which it was prepared. Reuse of and improper reliance on this document without written authorization and adaptation by Kimley-Horn and Associates, Inc. shall be without liability to Kimley-Horn and Associates, Inc.